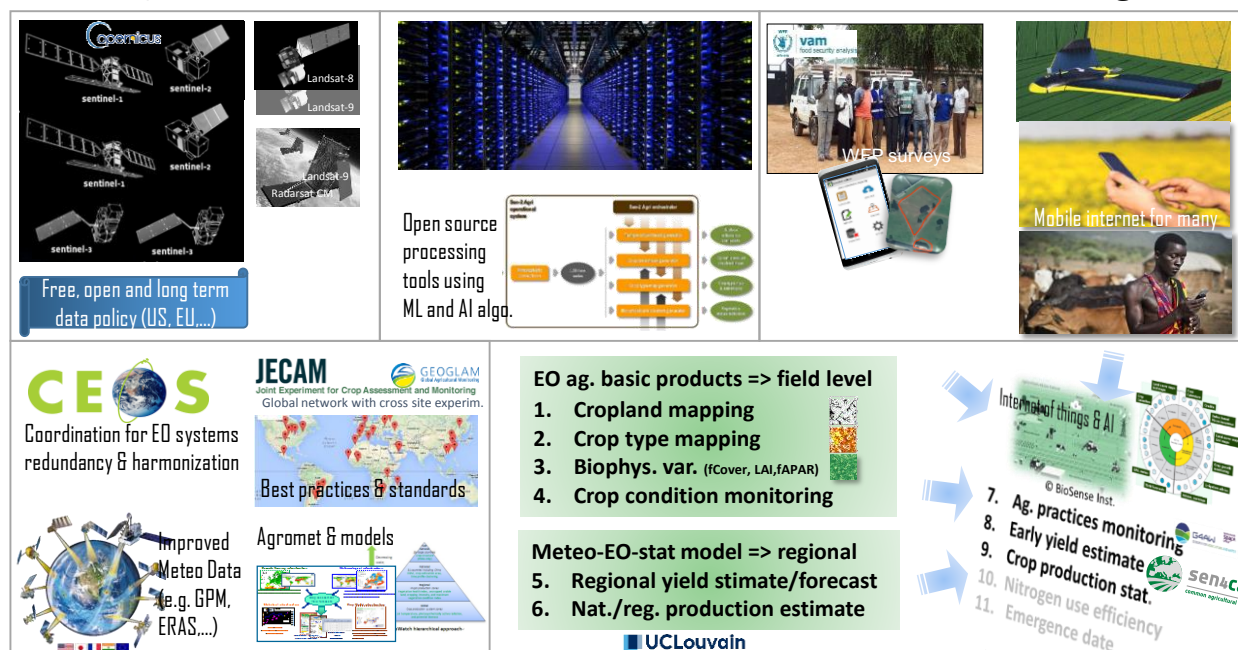
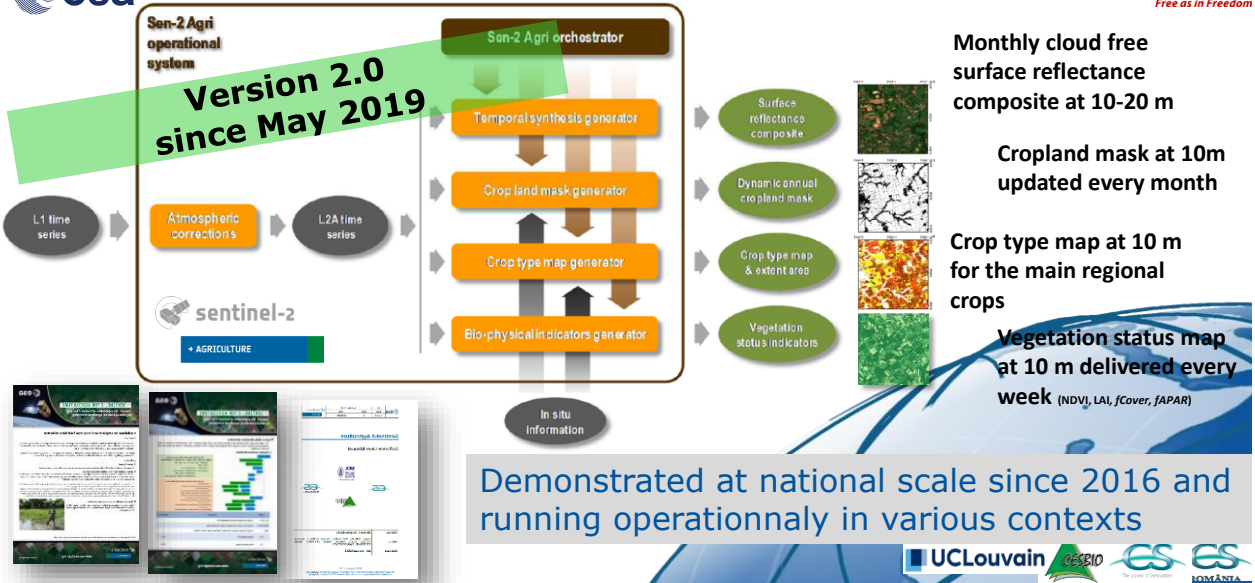


Sen2-Agri put some pieces of the EO and IT (r)evolutions together



Sen2Agri system : an open source system running automatically in NRT or off-line, locally or in the cloud



Produce high resolution EO products suitable for Agricultural Monitoring from local to national scales

Processing chains validated over a wide range of cropping systems around the world

Download and process Sentinel-2 and Landsat 8 dense time series without any effort

Cutting-edge image processing methods are performed automatically over your region and monitoring period

Access through a Graphical User Interface

System to be installed on a Linux server but easily accessible and configurable on a graphical user interface through your favorite web browser

Free and Open source system under GPL license

Based on Orfeo Toolbox and SLURM

Data privacy

Field data and products can be processed and stored locally



Sen2-Agri system : simple parametrization field data collection planning

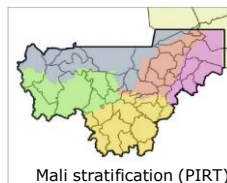


System initialization



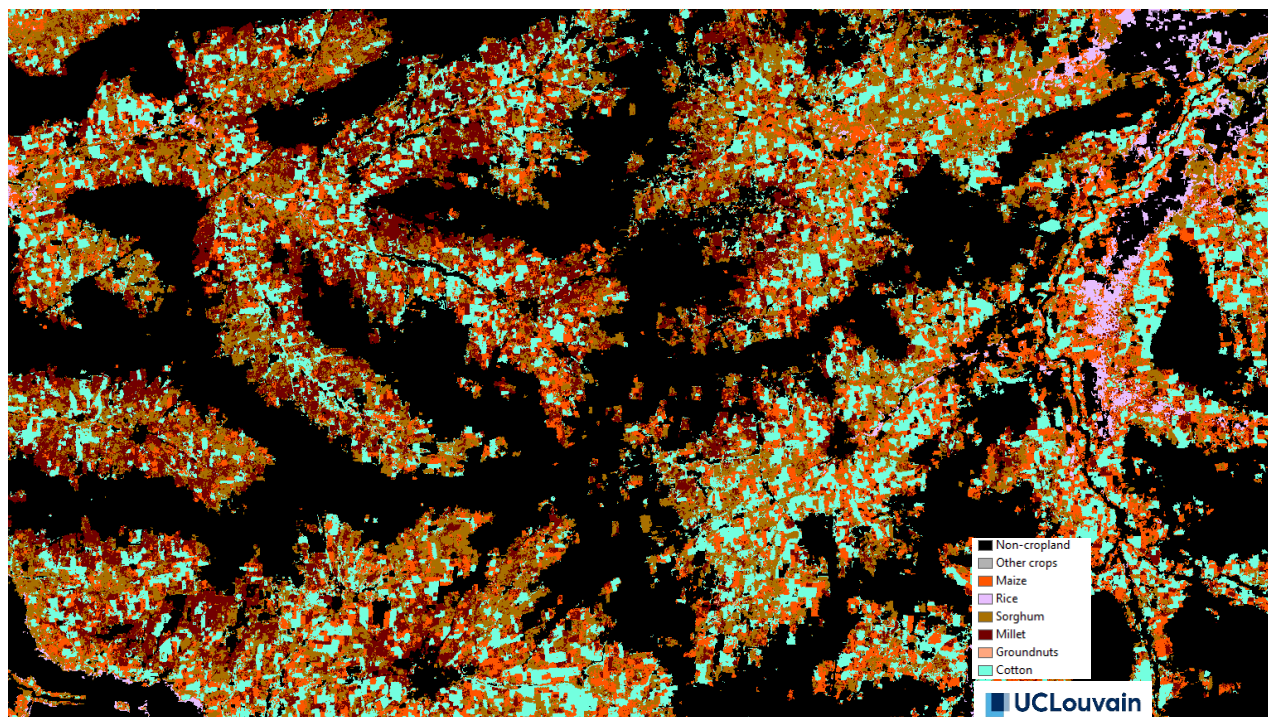
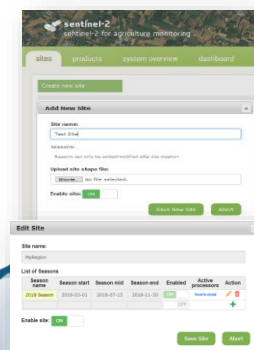
Sen2-Agri : parameters settings

Area of Interest	Shapefile to be uploaded
Monitoring period	Start and end dates to be defined
S2 or S2 + L8	To be selected
Other parameters	...



Sen2-Agri : field campaign

Sampling design	Stratification and sampling
Field visit	In situ data collection – early survey In situ data collection – mid-season survey
Data upload	Field data quality control and formatting





sentinel-2

→ AGRICULTURE

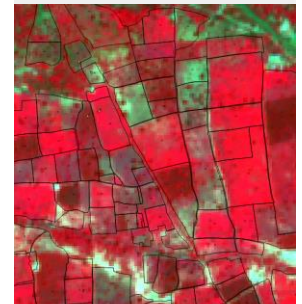
Open Source



Mali: National Statistics

November 2016
5/10/2016-25/11/2016

Cropland Area Indicator
per Mali Commune
for the 2016 growing
season



ICRISAT
INTERNATIONAL CROPS RESEARCH
INSTITUTE FOR THE SEMI-ARID TROPICS



UCLouvain

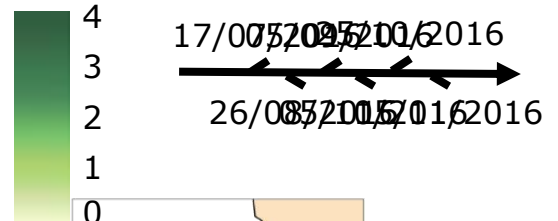


GEO GROUP ON
EARTH OBSERVATIONS



sentinel-2

→ AGRICULTURE



17/07/2016 20/07/2016 25/10/2016

26/08/2016 27/10/2016



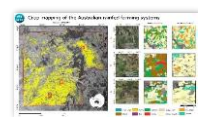
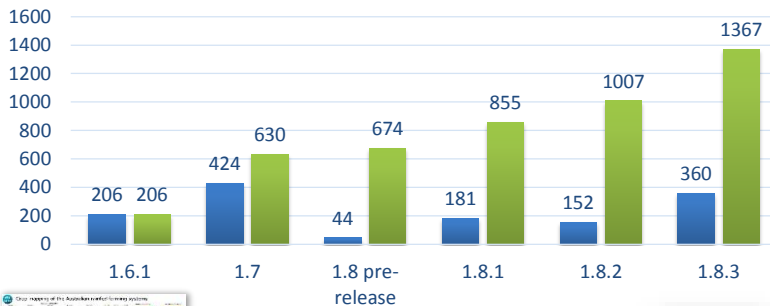
UCLouvain

ICRISAT
INTERNATIONAL CROPS RESEARCH
INSTITUTE FOR THE SEMI-ARID TROPICS



Sen2-Agri vivid community of users

Downloads since July 2017



■ Downloads ■ Cumulative Downloads



TOP 10 DOWNLOADS

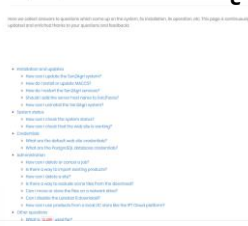
UNITED STATES:	50
GERMANY:	49
ITALY:	46
FRANCE:	31
SOUTH AFRICA	25
INDIA:	20
IRAN:	19
SPAIN:	18
UK:	18
INDONESIA:	16

A comprehensive set of tools to support Sen2-Agri users

Website with various resources



Frequently Asked Questions **FAQs**



Download the Sen2-Agri system here!

News

- Release of the version 1.7 of the Sen2-Agri system November 30, 2017
- Sen2-Agri system release July 7, 2017
- Demonstration phase results at national and local level July 5, 2017
- Production of a national crop type map over the Czech Republic using Sentinel-1/2 images May 15, 2017
- Sen2-Agri stakeholder meeting in South Africa May 12, 2017
- Sen2-Agri project at IRSE-37 May 8, 2017

Related Activities

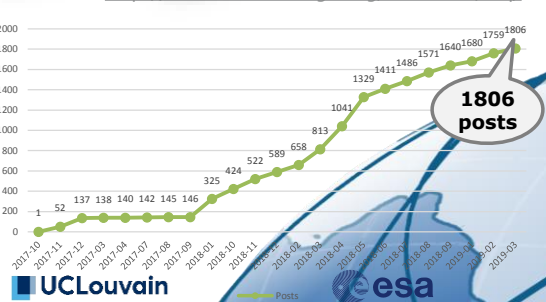


Forum - 8 topics



<http://forum.esa-sen2agri.org/>

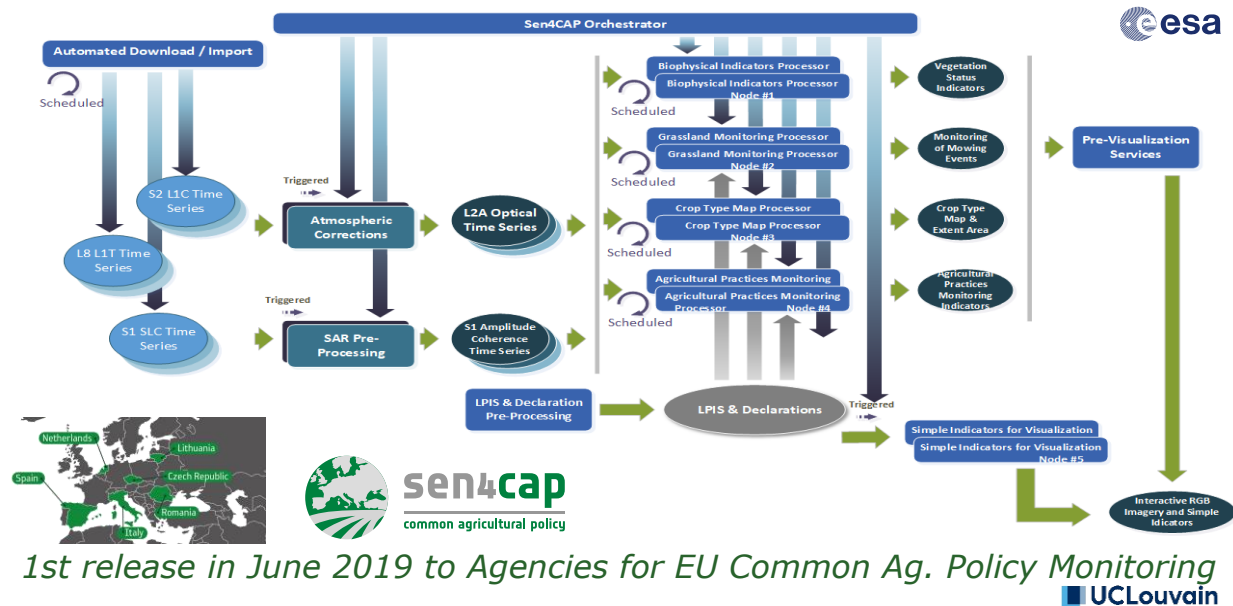
<http://www.esa-sen2agri.org/resources/faq/>



UCLouvain



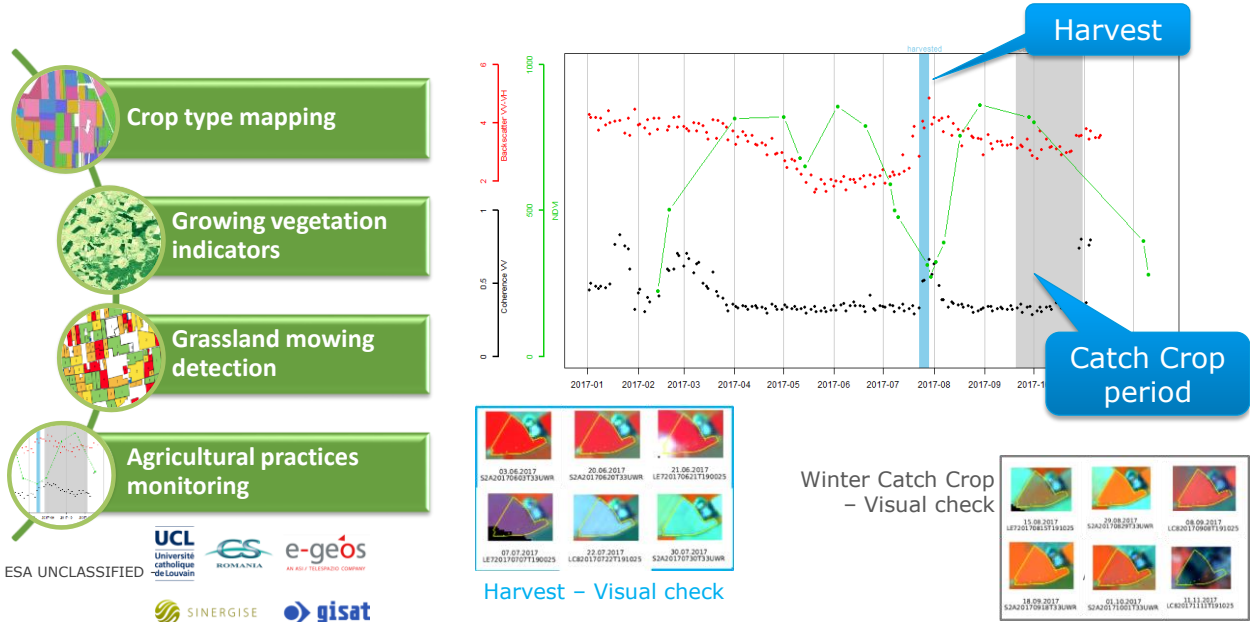
Sen4CAP open source system: adding to Sen2Agri new modules full processing of Sentinel-1 time series with object-based approach



2-day trainings in each 6 Paying Agencies premisses (Feb.- Apr.19)

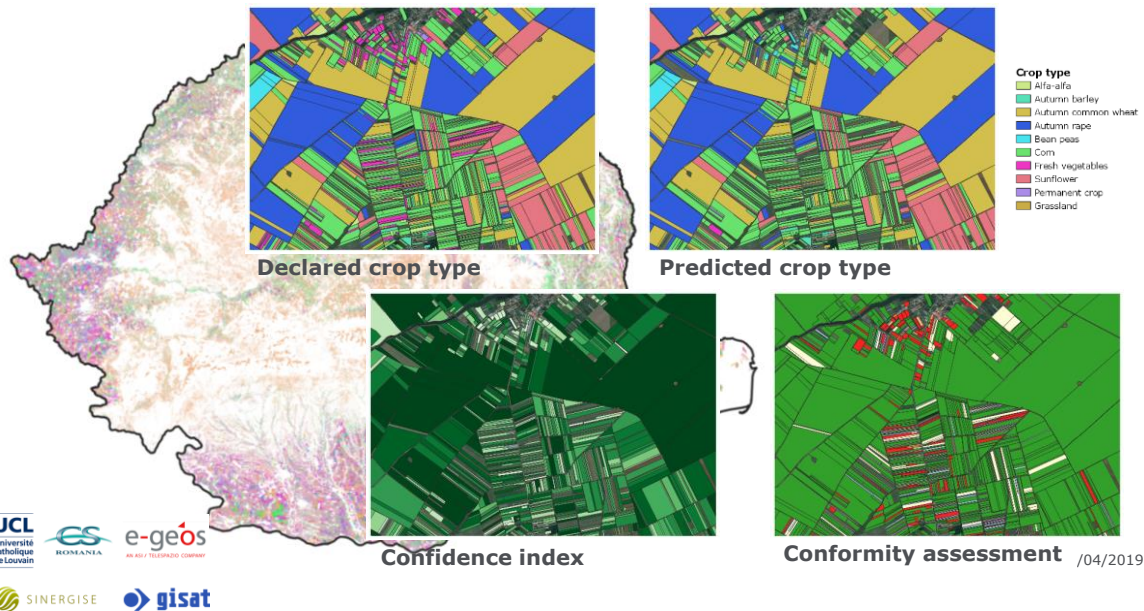


Sentinels indicators to monitor agricultural practices



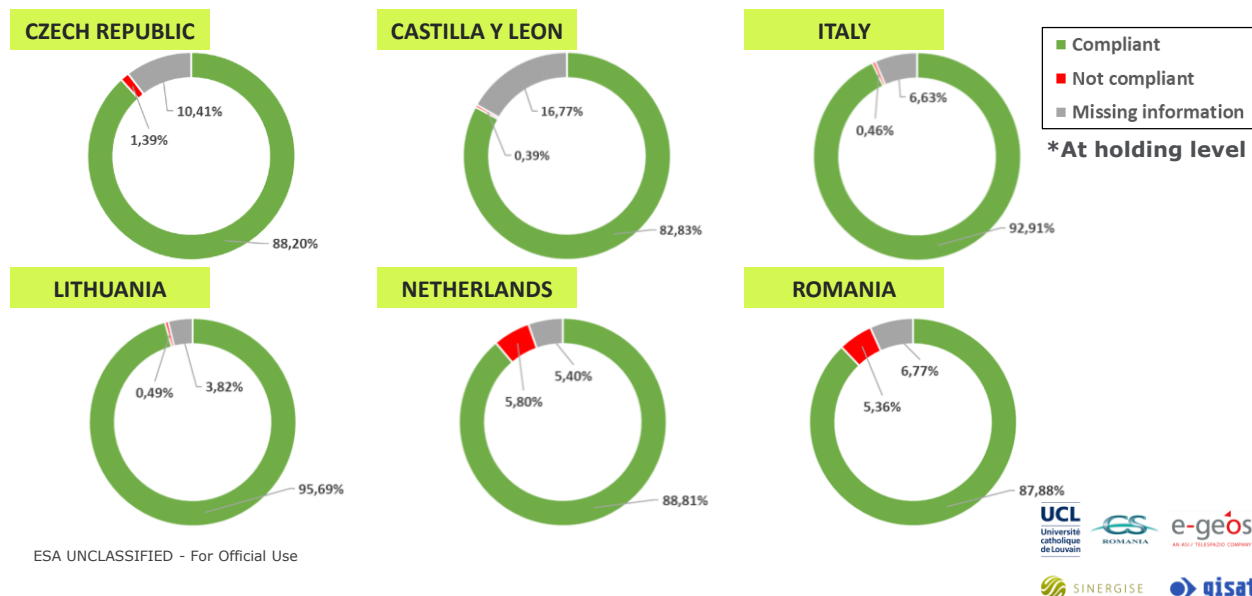
2018: National crop type mapping over 6 countries

Romania (100+ crop types)



/04/2019 | Slide 14

Crop diversification compliance analysis at holding level (more than 15 millions of parcels using 6 different regulations)



Sen2-Agri Version 2.0 – upgrades and trainings



New features:

- **Support for MAJA processing** => Can read new S2 data format
 - **Improvement of L2A processor** => parallelization
 - Support local DIAS repositories (CreoDIAS, MUNDI, ONDA) and also AWS
 - **New visualization tool** open source (WMS in QGIS, Firefox,...)
- + forthcoming ones : **integration of Sentinel-1** incl. coherence from Sen4CAP !

Forthcoming Sen2-Agri webinars (14h CEST) – 1st Thursday every two months

- ✓ 6 June 2019 : special v2.0 + advanced Q&A
- ✓ 4 July 2019
- ✓ 5 September 2019
- ✓ 7 November 2019

ESA Advanced Training Course on Land Remote Sensing – Agriculture
16-20 Sept. 2019 at UCLouvain (Belgium)
 Registration opened : landtrainng2019.esa.int

