

Sen4CAP at the Swedish Board of Agriculture for controls 2020

Goals:

- Test the system and see what's possible
- Use Sen4CAP for grassland activities as a risk analysis to avoid a second field control (12000 parcels)
- Prepare for AMS (area monitoring system) in 2023/24

Timeline 2020

February - Mars 2020

- Sen4CAP (Test login)
- Tested on one S2 tile
- Restriction under 60° north



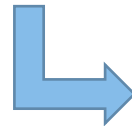
April - August 2020

- Creodias + Sen4CAP for southern Sweden
- Grassland analysis with Sinergise API (S2) + new cloudmask for northern Sweden



August - September 2020

- First analysis for production
- Sen4CAP analysis is delayed due to delay with S1 data and problems with grassland analysis
- API analysis for whole country



September - October 2020

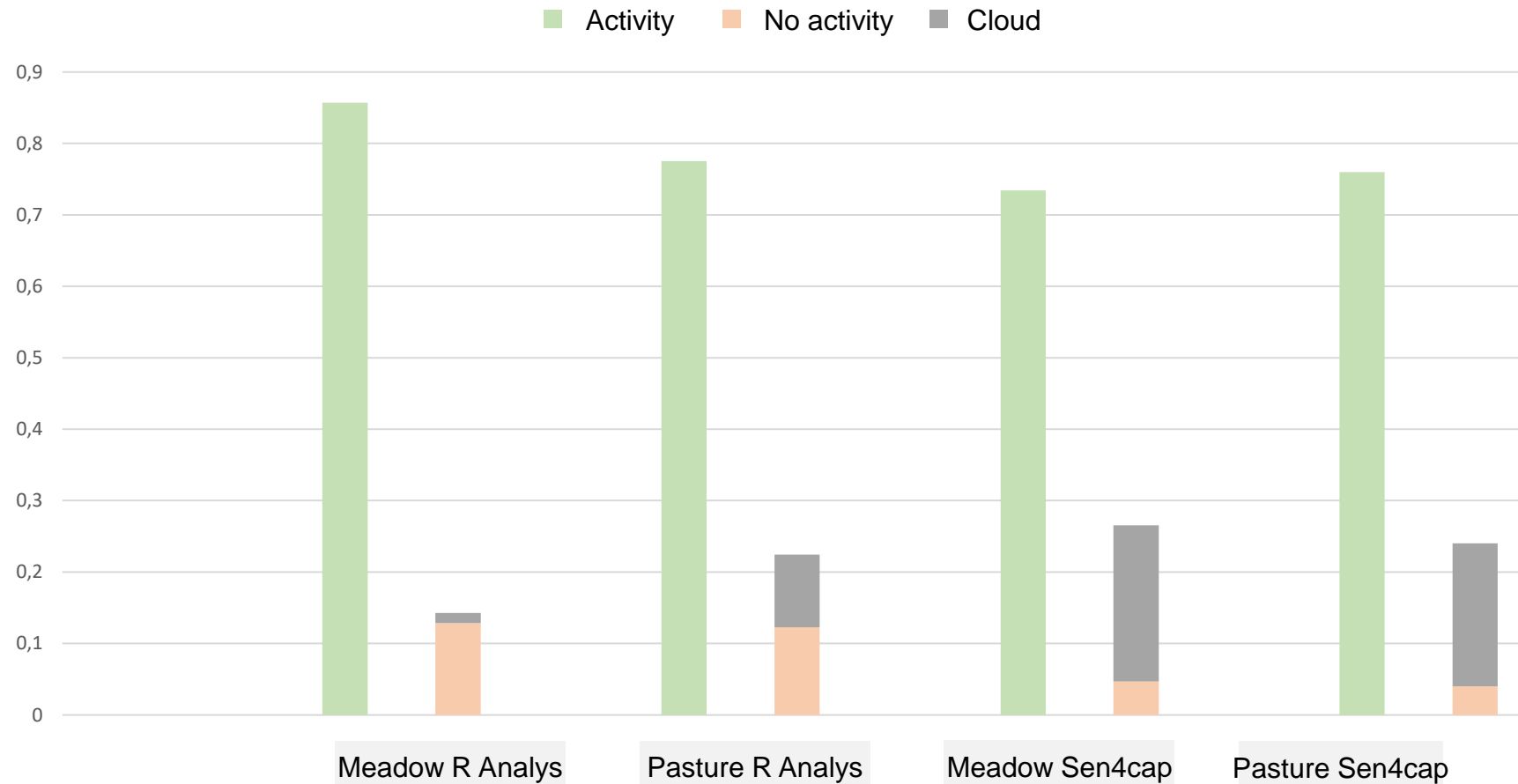
- Second analysis for production
- Sen4CAP + API analysis is used

Results

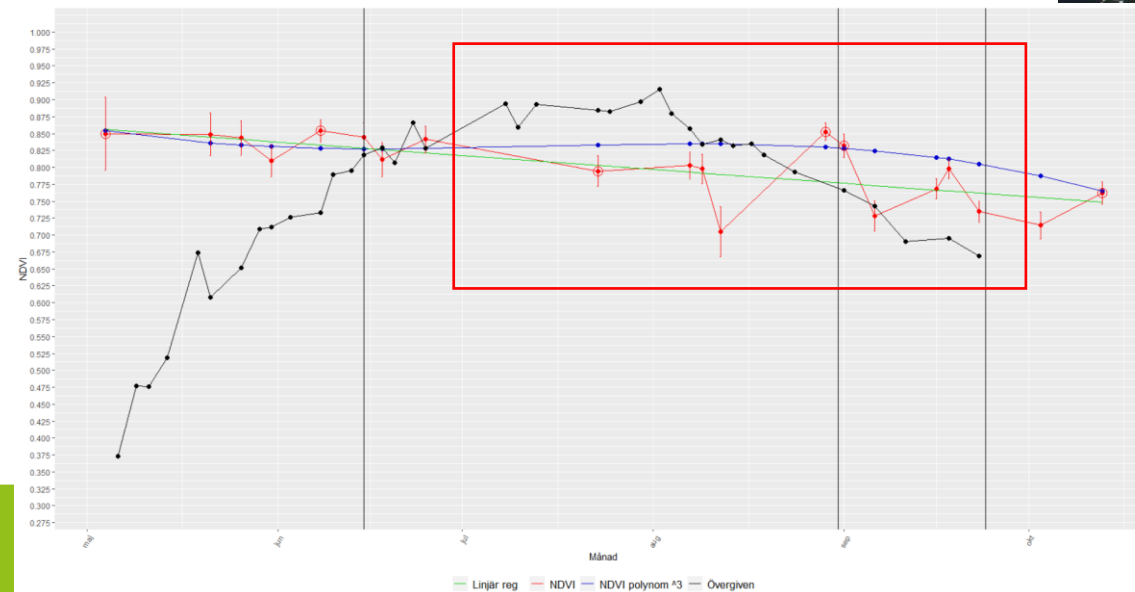
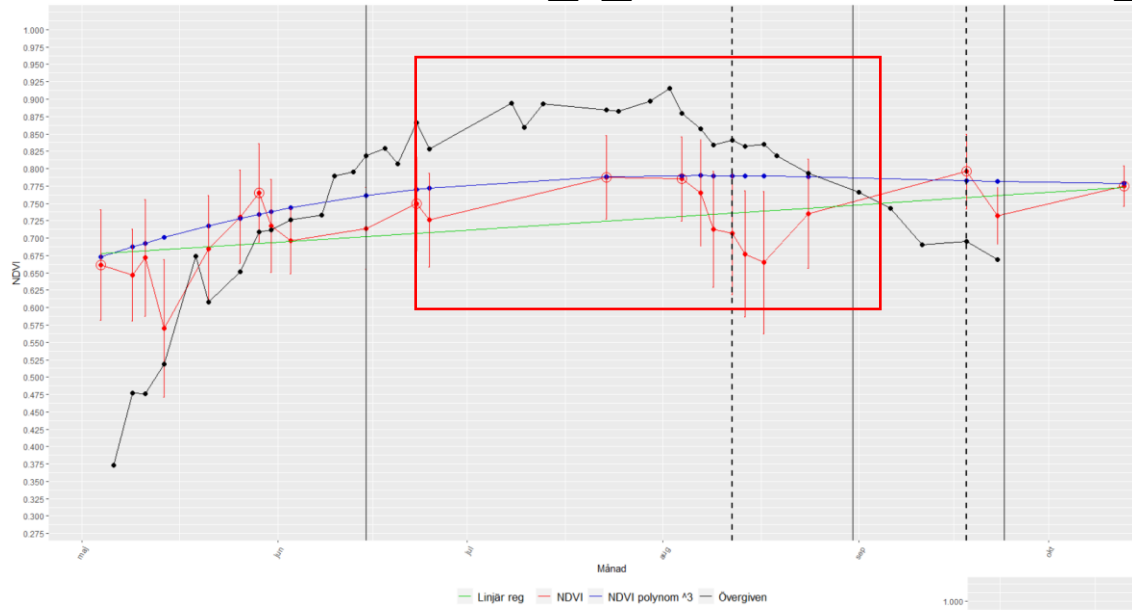
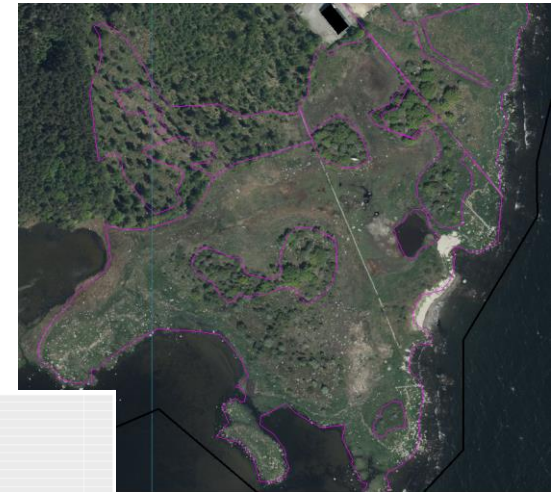
- 58% of activities were found
- 5-25 % of farms did not need a second control (regional differences)

- 15% of all parcels were too small or tree covered
- 5-10% are not “expected” to have activities
- Only 20% of all grazing activities were detected
- Cloudy July

Quality assessment



The biggest challenge Pastures



Plans 2021

- Analysis for BPS (basic payment scheme) for all parcels in Sweden to prepare for AMS
- Sen4CAP for crop classification and mowing analysis
- API analysis for pastures

- Continue with analysis for parcels with second field control
- Activity analysis for certain parcels for LPIS update

- Collect more field data (grazing and abandoned grassland)

Thank you

Contact:

Bastian Berlin

bastian.berlin@jordbruksverket.se

Swedish Board of Agriculture